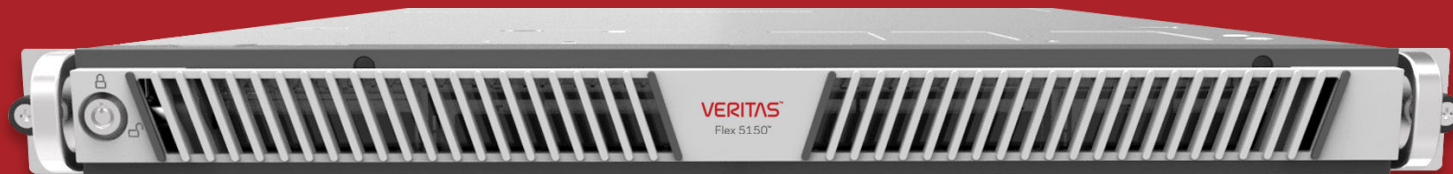
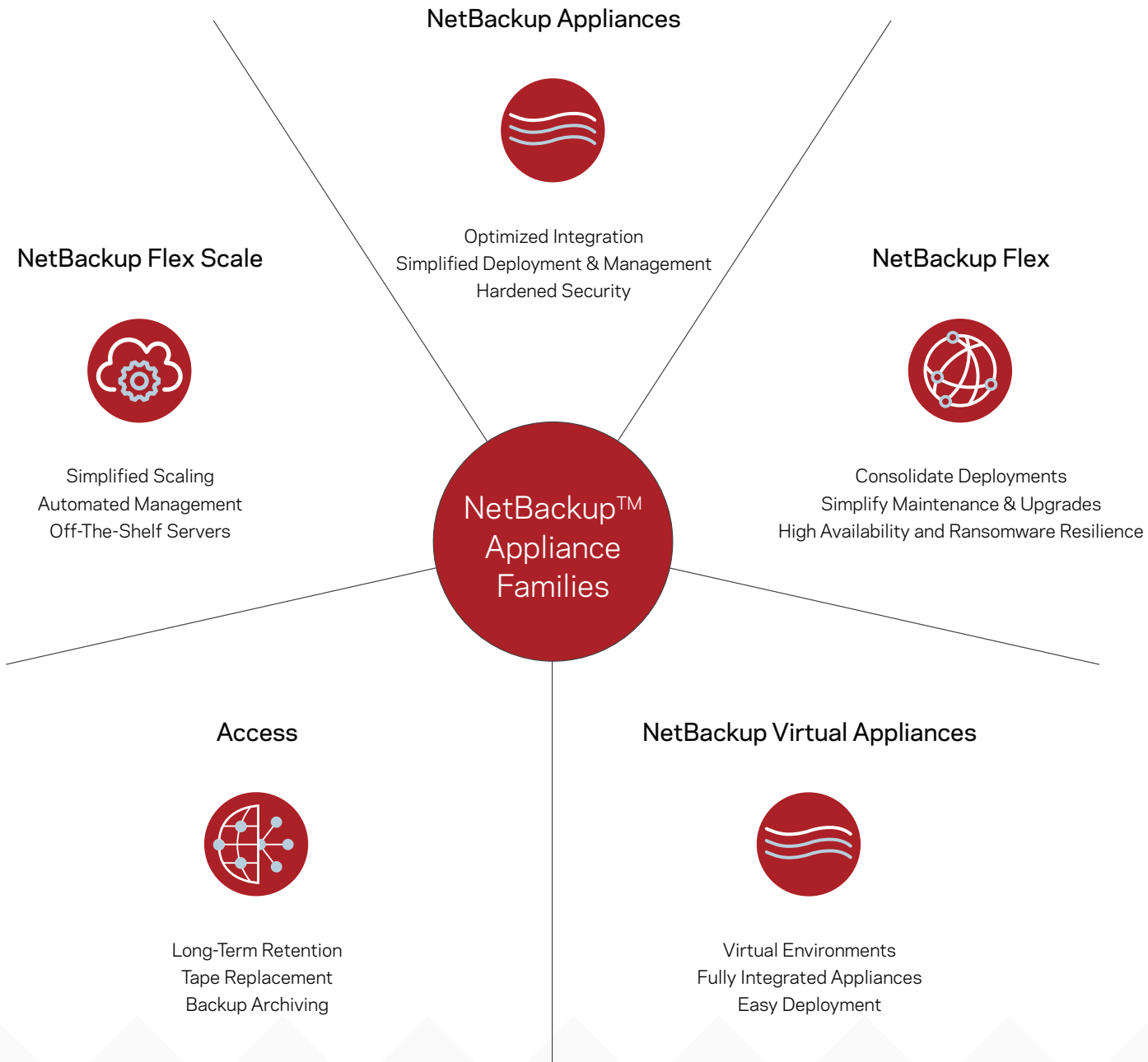
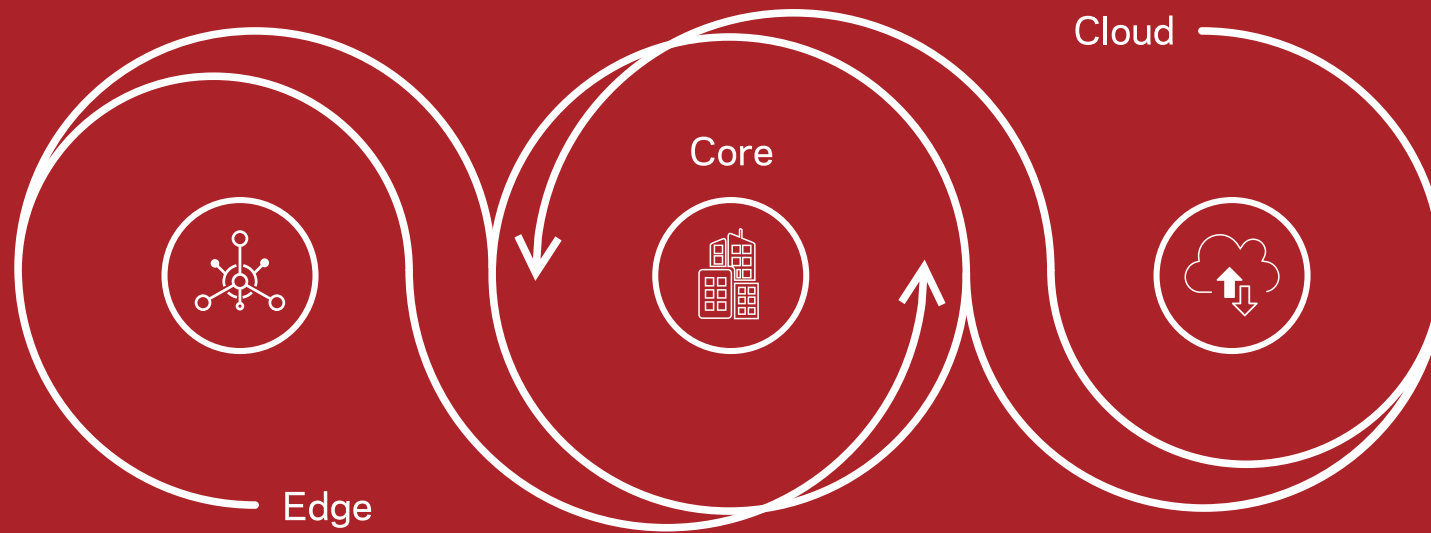


# VERITAS™

## The Veritas Family of Data Protection Appliances







The enterprise IT infrastructure is more than the core data center.



It spans from the edge to the core to the cloud. Veritas offers a family of data protection appliances powered by Intel Xeon processors that spans the complete enterprise and **ensures data availability, reduces costs and complexity** and **increases operational efficiency**.

# Appliance Use Cases



## Simplify and Consolidate in the Core Enterprise

NetBackup is offered in three deployment options for the enterprise core. Choose the deployment option or mix of options to minimize your total cost of ownership.

- NetBackup Flex Scale brings the power of NetBackup to the next generation data center, providing enterprise resiliency, simplified operations and a pay-as-you-grow, scale-out deployment model.
- The containerized architecture of the NetBackup Flex 5350 Appliance provides the flexibility to consolidate multiple NetBackup deployments in a single appliance, connect to multiple clouds and operate the data center on a service provider model.
- The NetBackup 5350 can take on the most demanding workloads and provide optimal performance for single-domain applications.



## Protection for the Small and Medium Enterprise

Veritas offers several appliance solutions for the small and medium enterprise.

- The NetBackup Flex 5250 Appliance provides ransomware resilience plus the capacity and performance to consolidate smaller NetBackup domains into a single appliance and connect to multiple clouds.
- NetBackup 5250 Appliance. With up to 440 TB of usable capacity, the the NetBackup 5250 Appliance is a great solution for a fast-growing organization that needs enterprise-class NetBackup data protection.
- NetBackup Virtual Appliances provide the same ease of use and optimized integration of NetBackup physical appliances and allow you to leverage existing virtual environments.



## Enterprise Data Protection at the Edge

Edge appliances must be compact, easy to use and run with very limited IT support.

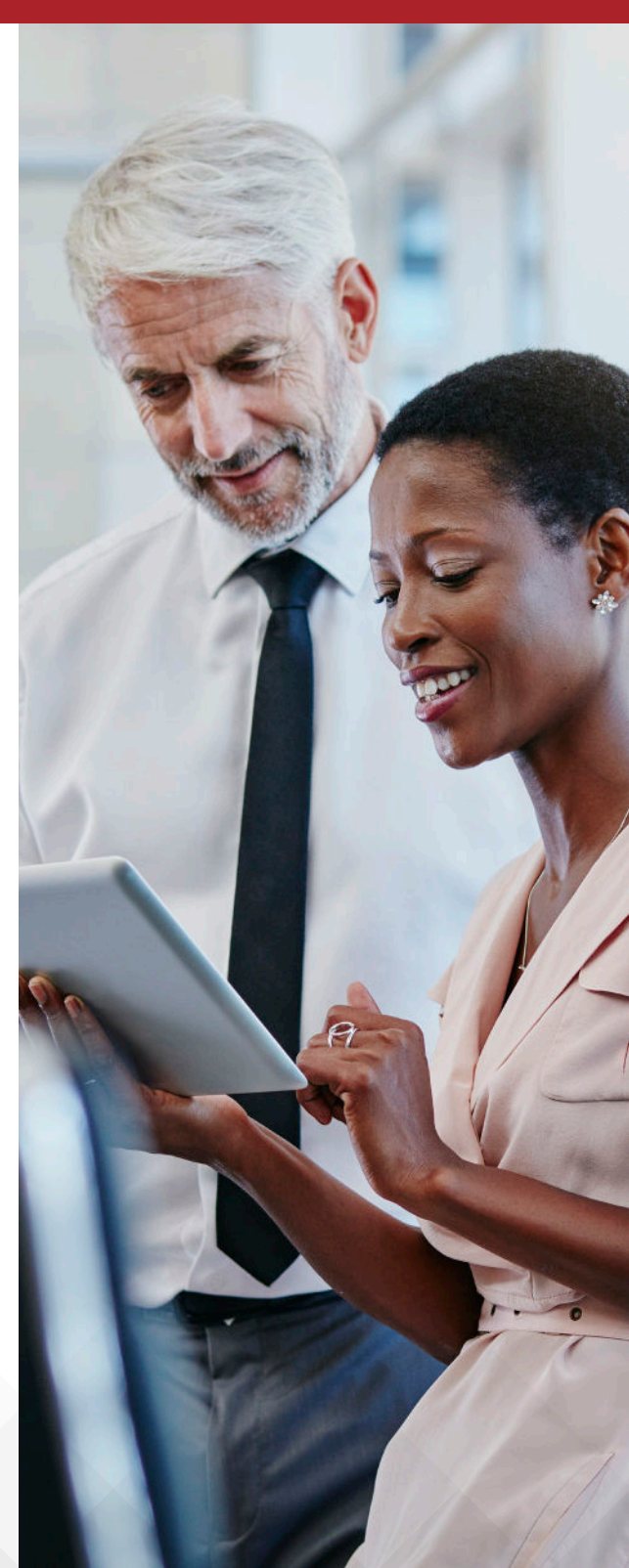
- The NetBackup Flex 5150 is designed with the edge in mind with its compact 1U form factor, ease of use and capability to efficiently replicate deduplicated data back to the central data center.
- Download a NetBackup Virtual Appliance for Remote Office and you have a complete data protection solution for a remote or branch office.



## Long-Term Retention

Quickly accessing data is the lifeblood of a successful organization.

The Veritas Access Appliance combines the speed of a disk storage solution with the economies of tape to create a new standard for long-term retention.



# Veritas Appliance Capabilities



## Optimized Integration and Complete, Single-Vendor Support

Access to business-critical data is imperative. Veritas appliances ensure end-to-end support of the complete solution. You won't need to load, install, test, integrate, optimize, manage and support multiple components, such as a server, storage, operating system, application software and network connectivity. There's no need to integrate with solutions from other suppliers. Veritas also provides end-to-end technical support via remote telemetry monitoring. There's one phone number to call if you need assistance.



## Hardened Security

Veritas appliances are developed from their inception with security as a number-one priority. We start with an enterprise-grade Linux operating system and remove all unused components. Then we take several steps to harden the appliance against malicious attack. Each element of the appliance, including the Linux operating system and NetBackup application, is tested for vulnerabilities using industry standards and advanced security products. These measures ensure that exposure to unauthorized access and resulting data loss or theft is minimized. Each new version of appliance software and hardware is verified for vulnerabilities before release. Veritas also updates third-party packages and modules as part of regular maintenance release cycles to reduce the risk of unknown threats.



## Simplified Management

To protect exponentially growing diverse data sets, enterprises often depend on multiple NetBackup Appliances. Appliance Management Server (AMS) provides a single, modern web-based appliance management console for monitoring and managing a fleet of NetBackup Appliances. AMS is included with NetBackup Appliances and is easy to set up and configure. AMS capabilities include dynamic performance monitoring, multiple appliance upgrade orchestration, authentication and authorization.



## Proactive Lifecycle Support

The Veritas NetInsights Console is a unified, SaaS-based platform that helps manage your data protection solution through its complete lifecycle. The platform leverages millions of data points from product telemetry, support diagnostics and the analysis power of the Veritas Predictive Insights engine to deliver actionable recommendations and tailored insights for software and appliance solutions—all within a single interface for a cohesive experience.



# Veritas Appliance Family

## NetBackup Flex Appliances powered by Intel Xeon Processors

A New Concept in Delivering  
Ransomware-Resilient  
Enterprise Data Protection



**NetBackup Flex 5350:** Consolidate NetBackup deployments on a single high-availability Appliance.

**NetBackup Flex 5250:** Capacity and performance to consolidate smaller NetBackup domains into a single appliance.

**NetBackup Flex 5150:** Data Protection for the Edge

The NetBackup Flex 5350 has the capacity (2 PB) and performance to consolidate multiple NetBackup deployments. Create NetBackup deployments in minutes so you can manage data protection as a service provider.

Starting at 10 TB and expandable up to 442 TB usable capacity, the NetBackup 5250 is ideal for remote locations as well as enterprise data centers

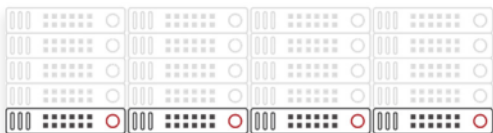
Designed for constrained edge environments, the NetBackup Flex 5150 with its compact 1U form factor and simplified management is easily supported in remote and branch offices where there are very limited IT resources.

- Ransomware resilience across the complete enterprise
- Reduce costs with consolidation
- Simplified maintenance and upgrades

---

## NetBackup Flex Scale

Pay-As-You-Grow Scale-Out  
Architecture Optimized for  
the Modern Data Center



NetBackup Flex Scale extends NetBackup with an automated, containerized, scale-out architecture. Now, organizations can easily scale industry-leading NetBackup in performance and capacity as they grow and change. Application owners can easily manage data protection for their workloads with an intuitive interface based on a comprehensive set of application programming interfaces (APIs) and software development kits (SDKs).

NetBackup services are automatically installed and enabled at the time of the deployment without any involvement from the user. Workloads are automatically balanced and scaled across the NetBackup Flex Scale cluster.

Infrastructure scales non-disruptively in performance and capacity by simply adding nodes. The complete hyperconverged infrastructure is managed from the same interface as the NetBackup services.



# Veritas Appliance Family

**NetBackup  
5350 & 5250 Appliances**  
powered by Intel Xeon Processors  
Optimized Performance for Single  
NetBackup Deployments



**NetBackup 5350:** Protection for the most demanding enterprise workloads.

**NetBackup 5250:** Protection for small or midsize workloads.

**NetBackup Copilot for Oracle:** Oracle database backup and recovery.

With 2 PB of usable capacity, the NetBackup 5350 Appliance delivers the highest capacity and performance for a NetBackup environment. Storage is protected by redundant controllers to achieve the highest levels of reliability.

The NetBackup 5250 runs the complete NetBackup software package and can be configured as a standalone NetBackup deployment. Storage is added by adding shelves or adding multiple 5250 Appliances to a deployment. The versatility of the NetBackup 5250 makes it an ideal solution for small or midsize organizations needing data protection for moderate workloads.

NetBackup Copilot lets database admins independently manage backups using their tools and RMAN scripts on their schedule, maintain visibility across all storage tiers and recover from any available copy.

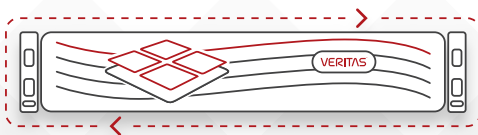
**Veritas Access Appliance**  
Cost-Effective, Long-Term Retention



- Scale to a raw storage capacity of 2.8 PB cost-optimized for long-term retention.
- Automatically tier data to the cloud.
- Deeply integrated with NetBackup and Veritas Enterprise Vault™.

The Access 3340 Appliance is a turnkey deployment of the Veritas software-defined Access file system. It is tuned for high-capacity long-term retention, tape replacement and backup archiving. Deep integration with NetBackup and Enterprise Vault provides a complete end-to-end long-term retention solution that extends into the cloud.

**NetBackup Virtual Appliances**  
Enterprise Data Protection  
In Virtual Environments



- Simple installation that can be loaded on a VMware ESX Server.
- Virtual NetBackup Appliances delivered pre-built.
- Expand capacity in 1-TB increments up to 250 TB.
- Reduce network usage by up to 99%.

The family of NetBackup Virtual Appliances are software-defined versions of physical NetBackup Appliances to deliver unified data protection and seamless hypervisor integration into existing virtual environments. Built on industry-leading NetBackup software, these appliances provide deduplication of data at the source and reduction in bandwidth utilization up to 99 percent. The family includes four virtual appliances so you can configure a complete NetBackup deployment in a virtual environment.

Find out how Veritas Appliances can help you meet your business needs.  
Talk to your sales rep today. For more information, visit [veritas.com/appliances](https://www.veritas.com/appliances)



# VERITAS™

Veritas Technologies is a global leader in data protection and availability. Over 50,000 enterprises—including 87 percent of the Fortune Global 500—rely on us to abstract IT complexity and simplify data management. The Veritas Enterprise Data Services Platform automates the protection and orchestrates the recovery of data everywhere it lives, ensures 24/7 availability of business-critical applications, and provides enterprises with the insights they need to comply with evolving data regulations. With a reputation for reliability at scale and a deployment model to fit any need, Veritas Enterprise Data Services Platform supports more than 800 different data sources, over 100 different operating systems, more than 1,400 storage targets, and more than 60 different cloud platforms. Learn more at [www.veritas.com](https://www.veritas.com). Follow us on Twitter at [@veritastechllc](https://twitter.com/veritastechllc).

+1 (866) 837 4827

2625 Augustine Drive, Santa Clara, CA 95054

For specific country offices and contact numbers, please visit our website.

[www.veritas.com](https://www.veritas.com)